



MIDWEST
GROUNDCOVERS
LLC

Welcome to the Midwest Natural Garden!

In 2011, Midwest Groundcovers purchased The Natural Garden® which operated as a retail nursery since 1953. While the Midwest Natural Garden now operates solely as a production facility, it has kept the integrity of the local eco-type native plants, producing plants from stock plants or seed sourced within 90 miles of St. Charles, Illinois.

By 2015, with the use of native plants on the rise, it became clear that Midwest Groundcovers needed a tool to help showcase and educate the industry about natives, and the Midwest Natural Garden Display Gardens were born. We hope you enjoy your visit!



Carex Classroom

The Carex Classroom is designed to help educate specifiers, ecologists, landscape designers and plant experts on the nuances of the many species available.

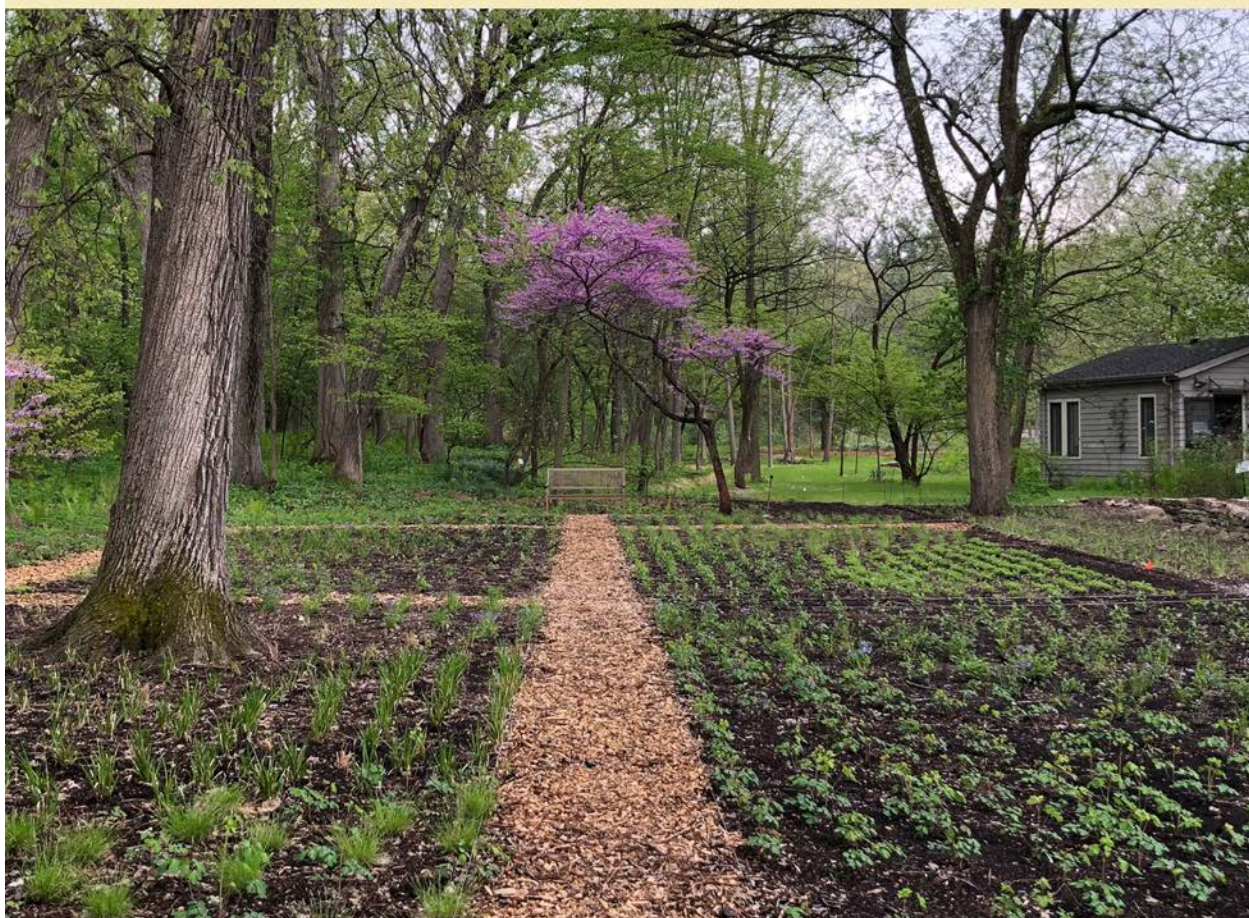
The idea for the Carex Classroom evolved in response to several different needs:

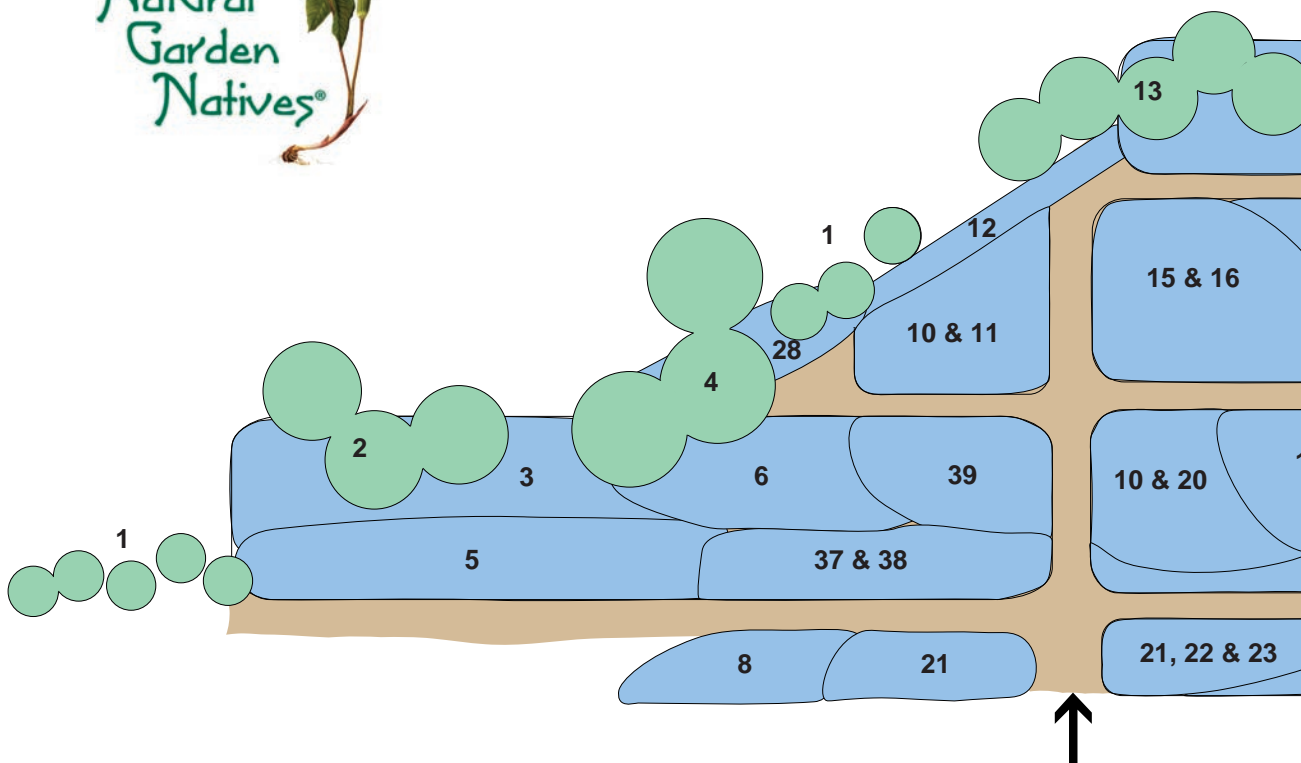
- To help gardeners and designers learn more about this important genus and increase their appreciation for its many attractive species
- To provide a display garden where visitors could see various sedges in a garden environment
- To promote increased use of sedges in designed landscapes
- To create multi-functional propagation beds for Natural Garden Natives® Carex species



The Natural Garden Natives® Carex Classroom includes woodland and wetland sedges. In this regard, it is somewhat experimental and allows us and you to better understand how wetland sedges perform when planted outside of a wetland environment. The soils in this garden are rich in humus as would be found in a rich mesic woodland. We may find that some of them grow more aggressively than they would if grown in a drier, more well-drained soil. We will be watching all of these elements and will keep you informed of our findings through the Natural Garden Natives® E-Newsletter. Check back with us!

We hope you find your visit instructive and that you leave with fresh ideas on how to include these important species in your gardens.





KEY



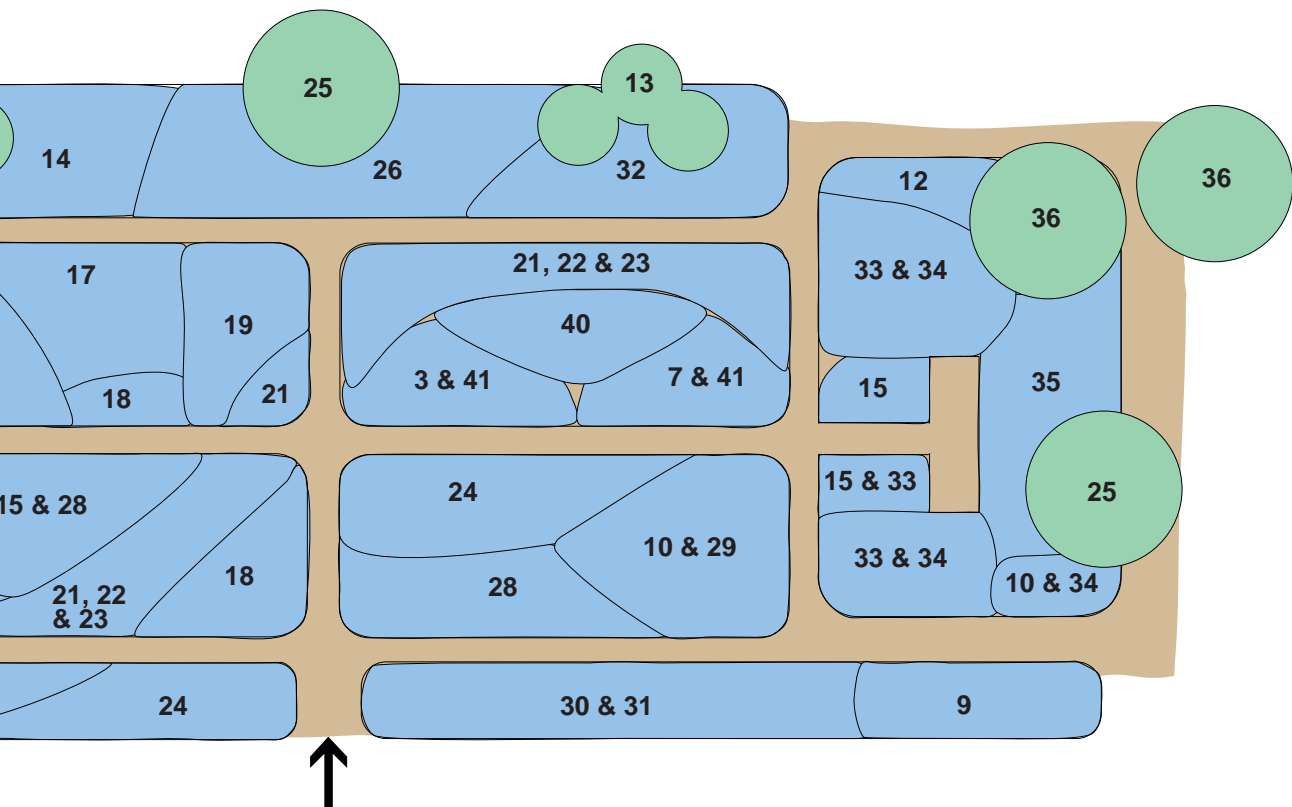
- 1 - *Rosa blanda*
- 2 - *Corylus americana*
- 4 - *Hamamelis virginiana*
- 13 - *Lindera benzoin*
- 25 - *Cornus alternifolia*
- 36 - *Hamamelis virginiana*



- 3 - *Eurybia (Aster) macrophylla*
- 5 - *Carex bicknellii*
- 6 - *Carex crinita*
- 7 - *Solidago flexicaulis*
- 8 - *Carex pellita*
- 9 - *Solidago caesia*
- 10 - *Arisaema triphyllum*
- 11 - *Carex blanda*
- 12 - *Carex shortiana*



- 14 - *Carex squarrosa*
- 15 - *Aquilegia canadensis*
- 16 - *Carex bromoides*
- 17 - *Carex cristatella*
- 18 - *Carex comosa*
- 19 - *Carex lupulina*
- 20 - *Carex jamesii*
- 21 - *Carex pensylvanica*
- 22 - *Phlox divaricata*



ensis



- 23 - *Polemonium reptans*
- 24 - *Symphyotrichum (Aster) shortii*
- 26 - *Carex gracillima*
- 27 - *Carex grayi*
- 28 - *Sedum ternatum*
- 29 - *Carex radiata*
- 30 - *Carex stipata*
- 31 - *Chelone glabra*
- 32 - *Carex normalis*



- 33 - *Carex rosea*
- 34 - *Mertensia virginica*
- 35 - *Carex stricta*
- 37 - *Carex frankii*
- 38 - *Lobelia silphilitica*
- 39 - *Carex sartwellii*
- 40 - *Carex trichocarpa*
- 41 - *Podophyllum peltatum*

Display Gardens

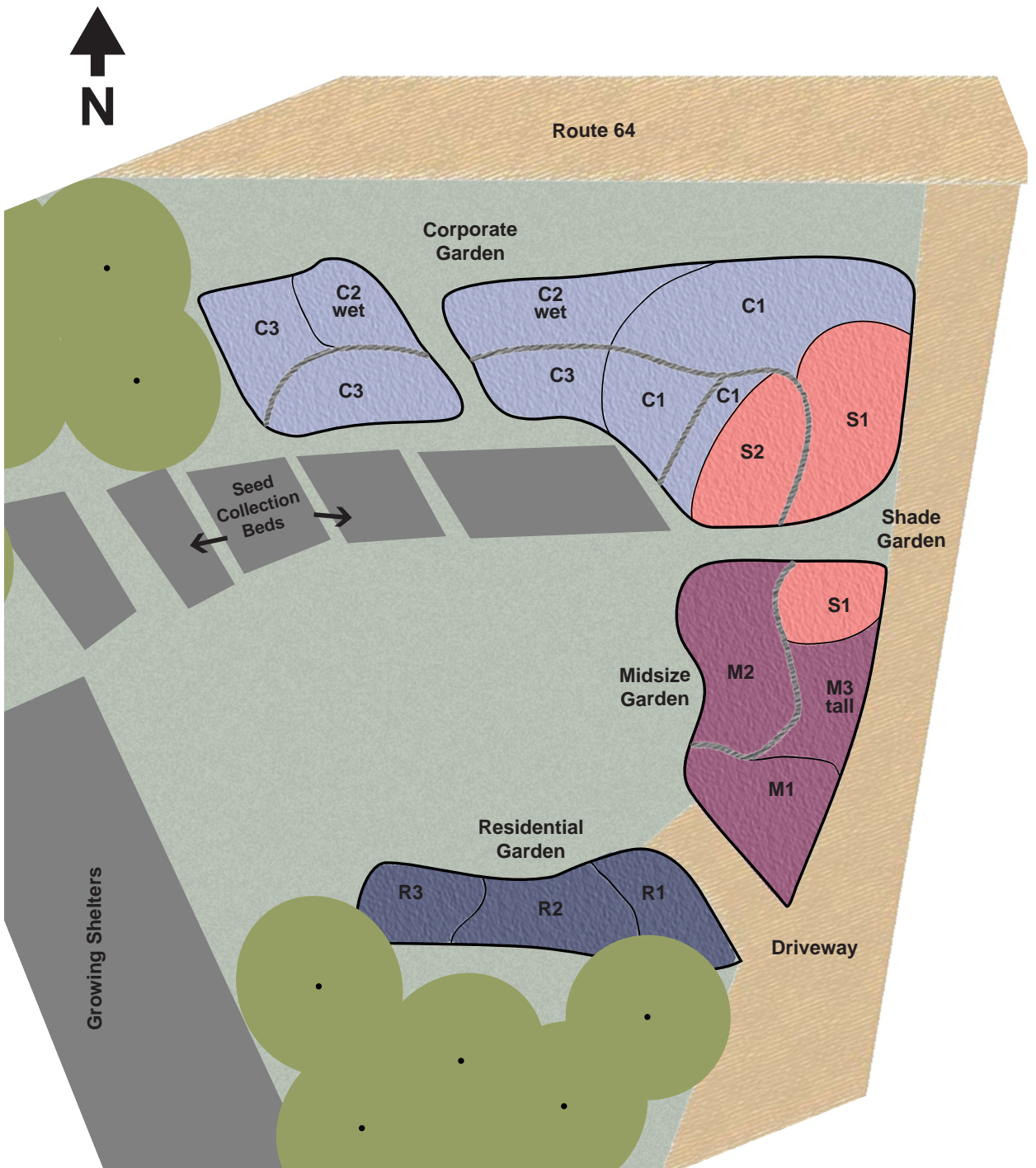
The Midwest Native Gardens were designed and installed by Austin Eischeid and Jens Jensen in the spring of 2020. The gardens are composed primarily of Natural Garden Natives®, our collection of plants that are local-eco type within 90 miles of St. Charles, Illinois.

There are many benefits to using natives in the landscape – their adaption to the local climate, importance to pollinators and other wildlife, and the fact that they require lower maintenance inputs after establishment, to name a few. However, they are often thought of as too wild or unwieldy to be used alone in a designed landscape.

The intention of these gardens was to change those perceptions of natives – to put aesthetics at the forefront, and show examples of how they can be used on different scales; from residential sized compositions - smaller statured plants in smaller numbers, appropriate for a typical home's front entrance, to mid-sized displays that could be used for slightly larger areas, such as the backyard of a residential property, to larger plants in larger quantities, appropriate for big spaces such as a corporate campus.

Aside from a concept plan, there was no drawn design for these gardens. Plant lists were developed weighing which species fit together ecologically, as well as how they would work together from a design standpoint. From there, plants were assigned percentages based on how they would be used in the composition – higher percentages for plants that would act as the groundcover layer, and smaller percentages for plants that would serve as accents. Austin and Jens were on site to lay out the plants, discussing the ecological and design importance as they did.





C1, C2 wet, C3: Corporate Garden • M1, M2, M3 tall: Midsize Garden
R1, R2, R3: Residential Garden • S1, S2: Shade Garden

Residential Plant List

R1	%	# plants (18" on center)
<i>Bouteloua curtipendula</i>	15%	120
<i>Coreopsis palmata</i>	15%	120
<i>Echinacea purpurea</i>	10%	80
<i>Helianthus occidentalis</i>	5%	40
<i>Liatris aspera</i>	18%	144
<i>Mertensia virginica</i>	10%	80
<i>Penstemon digitalis</i>	10%	80
<i>Schizachyrium scoparium</i>	17%	136



R2	%	# plants (18" on center)
<i>Asclepias tuberosa</i>	5%	10
<i>Carex pensylvanica</i>	15%	31
<i>Dalea purpurea</i>	10%	21
<i>Dodecatheon meadia</i>	5%	10
<i>Eragrostis spectabilis</i>	10%	21
<i>Geum triflorum</i>	10%	21
<i>Heuchera richardsonii</i>	8%	17
<i>Lythrum alatum</i>	9%	19
<i>Parthenium integrifolium</i>	5%	10
<i>Solidago caesia</i>	3%	6
<i>Sporobolus heterolepis</i>	20%	41



R3	%	# plants (18" on center)
<i>Allium cernuum</i>	15%	65
<i>Carex muskingumensis</i>	15%	65
<i>Carex rosea</i>	20%	86
<i>Echinacea purpurea</i>	9%	39
<i>Eurybia macrophylla</i>	15%	65
<i>Lobelia siphilitica</i>	10%	43
<i>Mertensia virginica</i>	3%	13
<i>Monarda fistulosa</i>	7%	30
<i>Tradescantia ohiensis</i>	3%	13
<i>Zizia aurea</i>	3%	13



Midsize Garden Plant List

M1	%	# plants (18" on center)
Echinacea pallida	10%	59
Eragrostis spectabilis	10%	59
Eryngium yuccifolium	5%	29
Geum triflorum	10%	59
Monarda punctata	15%	88
Panicum virgatum	10%	59
Parthenium integrifolium	10%	59
Sporobolus heterolepis	15%	88
Tradescantia ohiensis	10%	59
Vernonia fasticulata	5%	29



M2	%	# plants (18" on center)
Agastache scrophulariaefolia	3%	30
Amorpha canescens	7%	70
Euphorbia corollata	10%	100
Liatris spicata	15%	150
Monarda punctata	20%	200
Schizachyrium scoparium	15%	150
Silene regia	15%	150
Viola pedata	15%	160

M3 tall	%	# plants (18" on center)
Coreopsis tripteris	3%	17
Eryngium yuccifolium	4%	23
Helianthus occidentalis	5%	29
Liatris pycnostachya	5%	29
Mertensia virginica	10%	58
Sanguisorba canadensis	3%	17
Schizachyrium scoparium	10%	58
Sporobolus heterolepis	60%	346



Corporate Garden Plant List

C1	%	# plants (18" on center)
Allium cernuum	10%	180
Angelica atropurpurea	2%	36
Carex bromoides	15%	269
Chelone glabra	4%	72
Coreopsis tripteris	3%	54
Deschampsia cespitosa	20%	359
Filipendula rubra	2%	36
Iris virginica var. shrevei	3%	54
Lespedeza capitata	3%	54
Lobelia cardinalis	7%	126
Mertensia virginica	4%	72
Panicum virgatum	5%	90
Penstemon hirsutus	6%	108
Physostegia virginiana	5%	90
Symphotrichum oolentangiense	8%	144
Veronicastrum virginicum	3%	54



C2	%	# plants (18" on center)
Asclepias tuberosa	8%	146
Baptisia alba	1%	18
Dalea purpurea	12%	219
Dodecatheon meadia	5%	91
Echinacea purpurea	8%	146
Liatris spicata	12%	219
Lythrum alatum	12%	219
Pycnanthemum virginicum	10%	182
Sporobolus heterolepis	25%	455
Vernonia fasciculata	7%	128

C3	%	# plants (18" on center)
Bouteloua curtipendula	20%	364
Coreopsis palmata	15%	273
Echinacea pallida	10%	182
Eurybia macrophylla	15%	273
Helenium autumnale	7%	128
Monarda fistulosa	8%	146
Parthenium integrifolium	10%	182
Schizachyrium scoparium	15%	273



Shade Plant List

S1	%	# plants (18" on center)
<i>Camassia scilloides</i>	6%	60
<i>Carex pensylvanica</i>	30%	600
<i>Dodecatheon meadia</i>	6%	60
<i>Geranium maculatum</i>	10%	100
<i>Podophyllum peltatum</i>	6%	60
<i>Polemonium reptans</i>	10%	100
<i>Polystichum acrostichoides</i>	8%	80
<i>Sedum ternatum</i>	8%	80
<i>Maianthemum racemosum</i>	6%	60
<i>Thalictrum dioicum</i>	10%	100



S2	%	# plants (18" on center)
<i>Adiantum pedatum</i>	15%	104
<i>Arisaema triphyllum</i>	5%	35
<i>Asarum canadense</i>	12%	83
<i>Aquilegia canadensis</i>	8%	55
<i>Carex albicans</i>	12%	83
<i>Dodecatheon meadia</i>	5%	35
<i>Hepatica nobilis var acuta</i>	5%	35
<i>Phlox divaricata</i>	13%	90
<i>Polygonatum biflorum</i>	5%	35
<i>Solidago caesia</i>	5%	35
<i>Symphyotrichum shortii</i>	10%	69
<i>Trillium grandiflorum</i>	5%	35



Notes